

TPRS Twister Machine

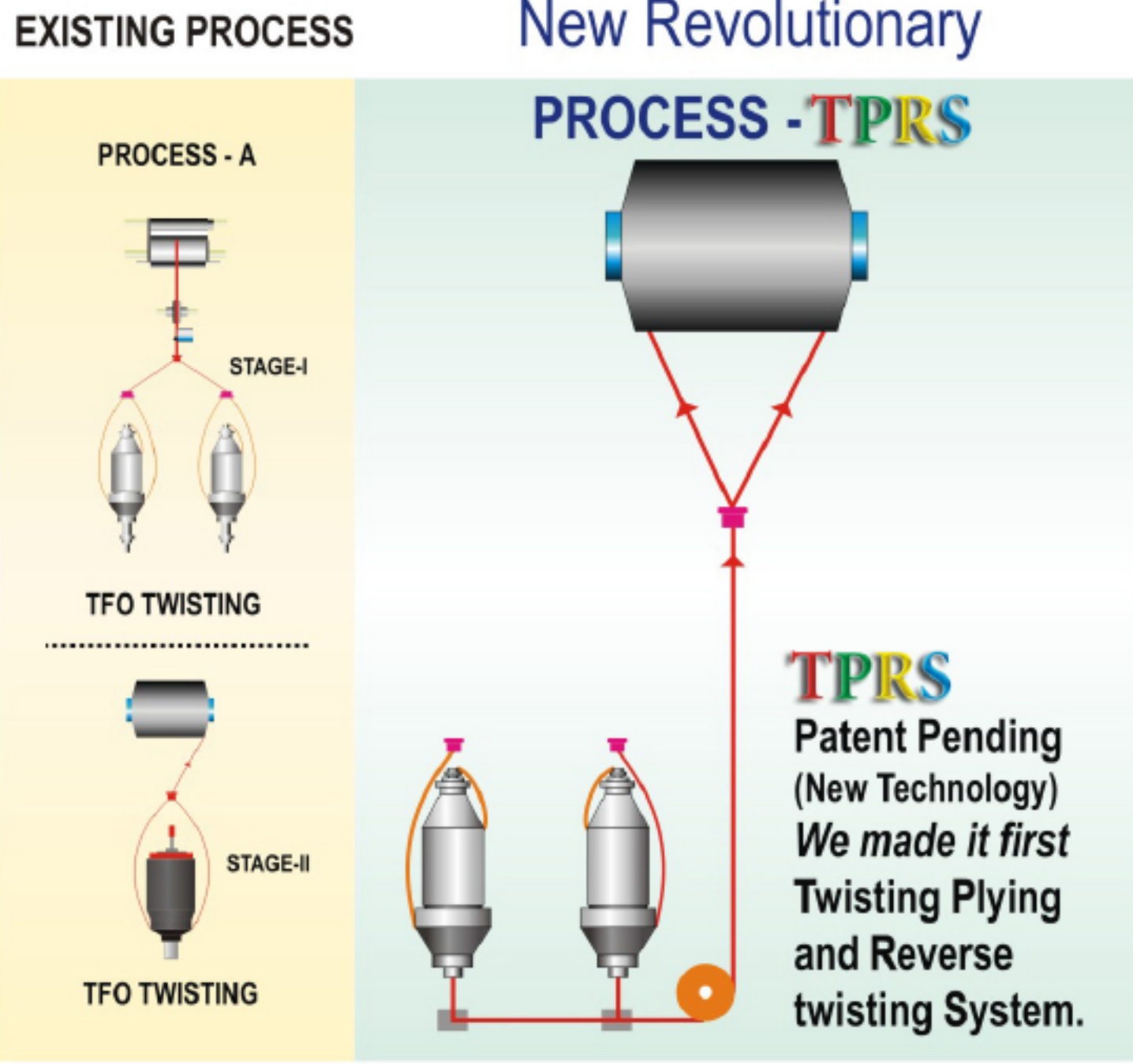


Being a Trend Setter in yarn twisting technology this is a very special phase for Meera Industries, Surat, India. We proudly want to announce that after research of several years we could invent the World's First SINGLE STEP S/Z Twisting Machines (TPRS Twister).

All kind of doubling yarns like Carpet Yarn, Embroidery Yarn, Fish Net Yarn, Sewing thread, Quilting thread, Salvage yarn, Tyre cord or any other double/triple yarn can be manufactured in a single step i.e. from COPS WINDER TO FINISH PACKAGE.

Meera's one step TPRS manufacturing method would give several Qualitative, Operational, Capital and Cost advantages.

Below is the general idea of an old and new process of manufacturing Doubling Yarn.



Superior Quality

The Quality of the yarn manufactured through TPRS technology has better quality than all previous technologies. This is because of the reverse twisting is taking place under the uniform tension of individual pre-twisted yarn. Hence the placing of yarn during final twist is most uniform than any other process.

Space Savings

TPRS Technology, not only reduces the operational cost instead it also helps in various ways to reduce your capital cost.

- Saving of Space due to single machine instead of two separate primary twister & secondary twister.
- Expenses on bobbins will be saved since the yarn will be manufactured directly from cops to final package.

Smooth Running

The beauty of the process will be realised in smooth running of the machines with very minimal breakages and clean environment in the work area.

Labour Advantage

Currently the industry's biggest worries are to manage labour shortages and the Launch of TPRS at this crucial time would definitely help manufacturer to solve this to a greater extent.

Above was just a brief summary of TPRS technology, for more details and machine demonstration you can visit our factory.

TPRS Salient Feature for making 150/2, 300/2, 1000/2, 2000/3.



Overall cost reduction up to 40%



TPRS Twister Machine (For any "S" & "Z" twist yarn)

Technical Specifications

	(TPRS - 19)			(TPRS - 25 MOTORISED)		
FRAME	Single deck both sides			Single deck both sides		
MACHINE WIDTH	800 mm			1010 mm		
SECTION PITCH	1830 mm			2130 mm		
MACHINE HEIGHT	1750 mm			2300 mm		
DENIER RANGE	100 to 600 denier			600 to 4500 denier		
TWIST RANGE	150 to 1500 t/m, yarn speed shall be set at max 70 mtrs/mm			50 to 1500 t/m, yarn speed shall be set at max 70 mtrs/mm		
MOTOR PULLEY	Set of 6000 to 10000 rpm			2000 to 5000 Inverter Controlled		
SPINDLE BELT / DRIVING	Endless belt with nylon rpm			Individual motor spindle		
ATTACHMENTS	RPM,TPM, M/MIN display, Yarn feed stop at yarn breakage, Anti - patterning device			RPM,TPM, M/MIN display, Yarn feed stop at yarn breakage, Anti - patterning device		
SPINDLE PITCH	360 mm			525 mm		
SPINDLE / SECTION	10			8		
NO. OF SECTION	8	10	12	8	10	12
NO. OF SPINDLE / DECK	80	100	120	64	80	96
CONNECTED LOAD PER DECK	12.5kW	12.5kW	15kW	32kW	40kW	48kW
LENGTH IN FEETS	53'	65'	77'	61'	75'	89'
LENGTH IN MTRS.	16.20	19.80	23.50	18.60	22.90	27.10

Supply Package

	TPRS - 19	TPRS - 25
SUPPLY PACKAGE	32 x 36 x 360 mm cops	32 x 36 x 320 Flanged bottle
SUPPLY PACK. WTG.	1 kg	1.6 kg
No. of Ply	2 or 3 ply	2 or 3 ply



Application

- ▶ Sewing Thread
- ▶ Embroidery Yarn
- ▶ Plyed Yarn
- ▶ Stitch Yarn
- ▶ Carpet Yarn
- ▶ Quilting Yarn
- ▶ Salvage yarn
- ▶ Tyre cord
- ▶ Fishnet yarn
- ▶ Medical stitch Yarn
- ▶ Footwear stitch yarn
- ▶ Any S & Z twisting application

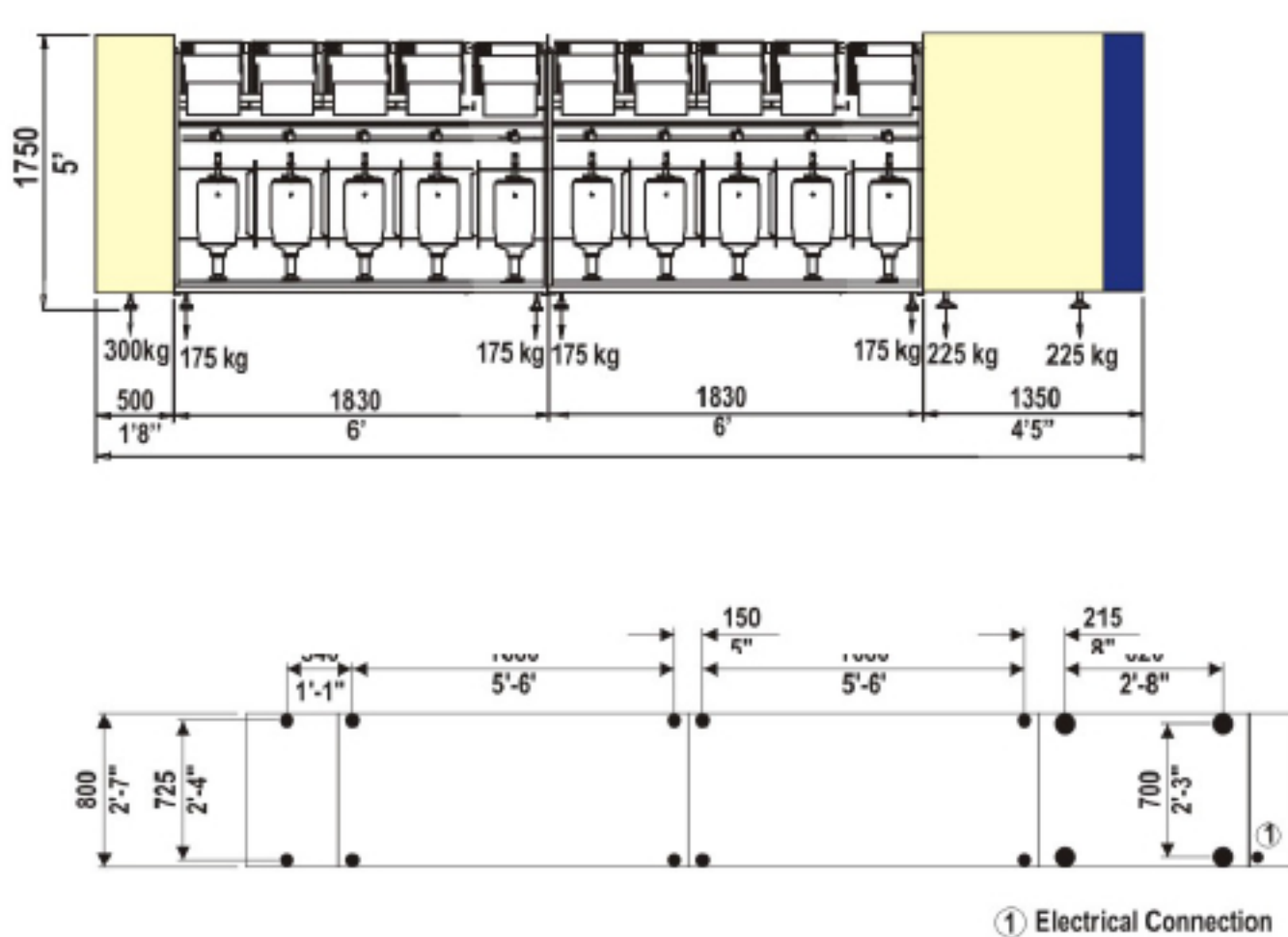
Take Up Package

	TPRS - 19	TPRS - 25
PACKAGE CAP.	1.5 kg knotless	2.5 kg knotless
PACKAGE CAP.	Take up 3.5 kg with knot	Take up 5 kg with knot
MAX.PACK DIA	250 mm	300 mm
PACKAGE TUBE	Dia 46 x 57 x 230	Dia 46 x 57 x 290



DIMENSIONS

TPRS - 19



DIMENSIONS

TPRS - 25

